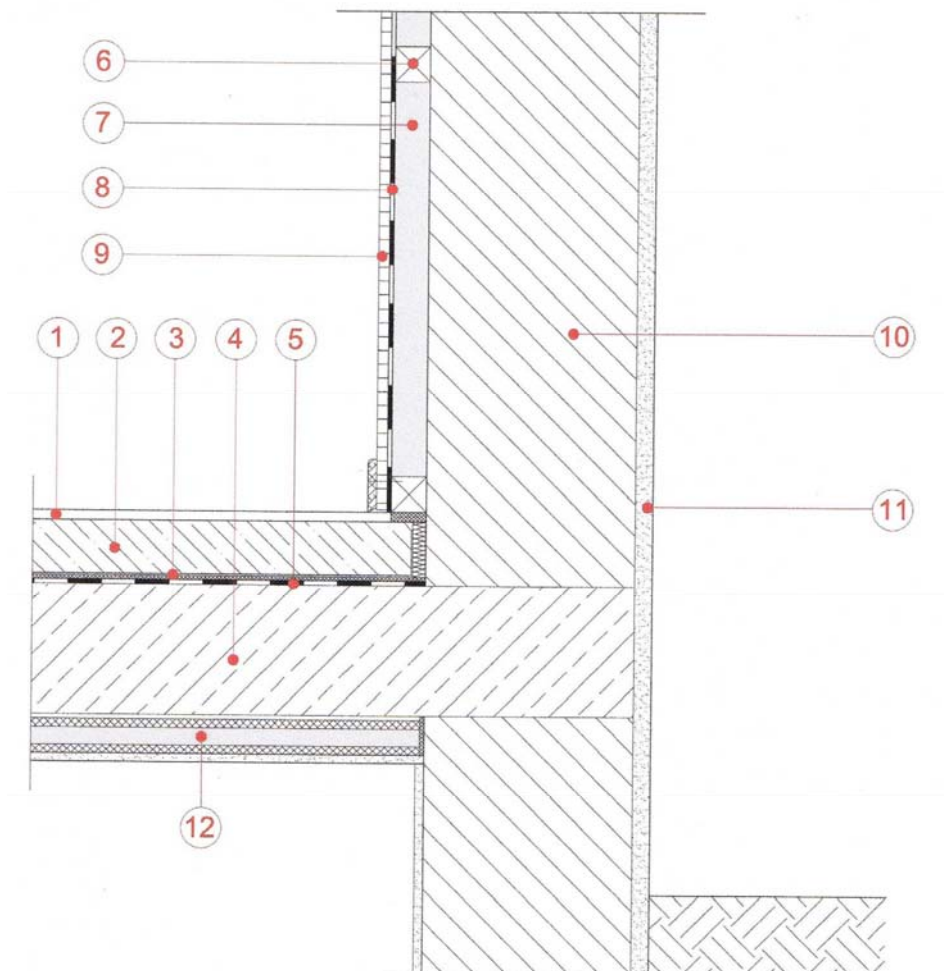


## Product – Vacupor<sup>®</sup> NT-B2

### Inside Insulation on Outer Wall

- |                         |  |
|-------------------------|--|
| 1 – Floor Covering      | 7 – Vacupor <sup>®</sup> NT-B2               |
| 2 – Screed              | 8 – Vapour Barrier / Breather Membrane       |
| 3 – Sound Absorption    | 9 – Plaster Board                            |
| 4 – Concrete or Similar | 10 – Block Work                              |
| 5 – Sealing Layer       | 11 – Render                                  |
| 6 – Timber Battening    | 12 – Cellar Board Vacupor <sup>®</sup> PS-B2 |



The sketches above and their related descriptions are typical representations only. All designs must be carried out for a specific project and should be cleared by the final client or their representatives with either Building Control or the relevant authorities.

#### **For Further Information Contact:**

EnviroHomes Ltd, Blyth CEC  
Ridley St, Blyth. NE24 3AG.  
Tel: 01670 542857  
Fax: 01670 542898  
Email: [enquiry@envirohomes.co.uk](mailto:enquiry@envirohomes.co.uk)  
Web: [www.envirohomes.co.uk](http://www.envirohomes.co.uk)