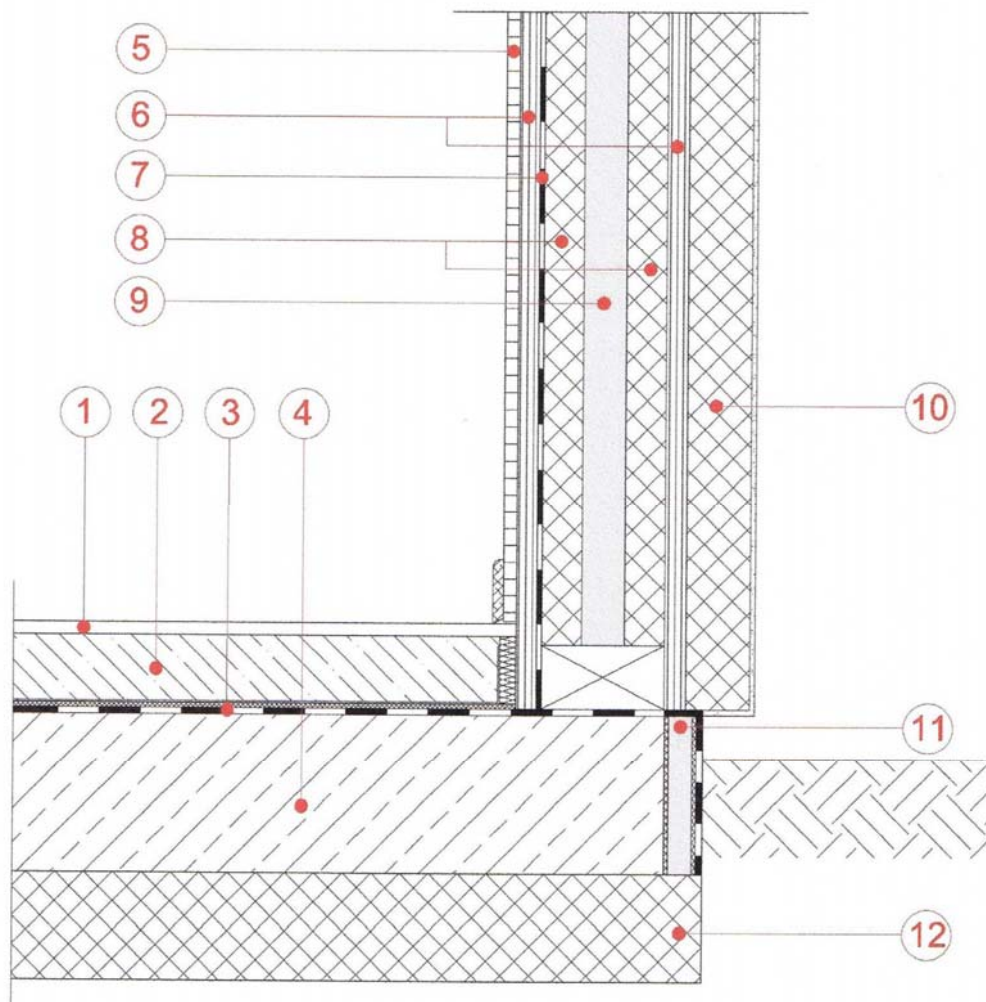


Product – Vacupor[®] NT-B2

Insulation With Timber Frame

- | | |
|-------------------------|--|
| 1 – Floor Covering | 7 – Vapour Barrier |
| 2 – Screed | 8 – Timber Studding |
| 3 – Sealing Layer | 9 – Vacupor [®] NT-B2 |
| 4 – Concrete or Similar | 10 – Insulated Render System |
| 5 – Plaster Board | 11 – Edge Insulation Vacupor [®] RP2-B2 |
| 6 – OSB or Chipboard | 12 – Base / Blinding Layer |



The sketches above and their related descriptions are typical representations only. All designs must be carried out for a specific project and should be cleared by the final client or their representatives with either Building Control or the relevant authorities.

For Further Information Contact:

EnviroHomes Ltd, Blyth CEC
Ridley St, Blyth. NE24 3AG.
Tel: 01670 542857
Fax: 01670 542898
Email: enquiry@envirohomes.co.uk
Web: www.envirohomes.co.uk