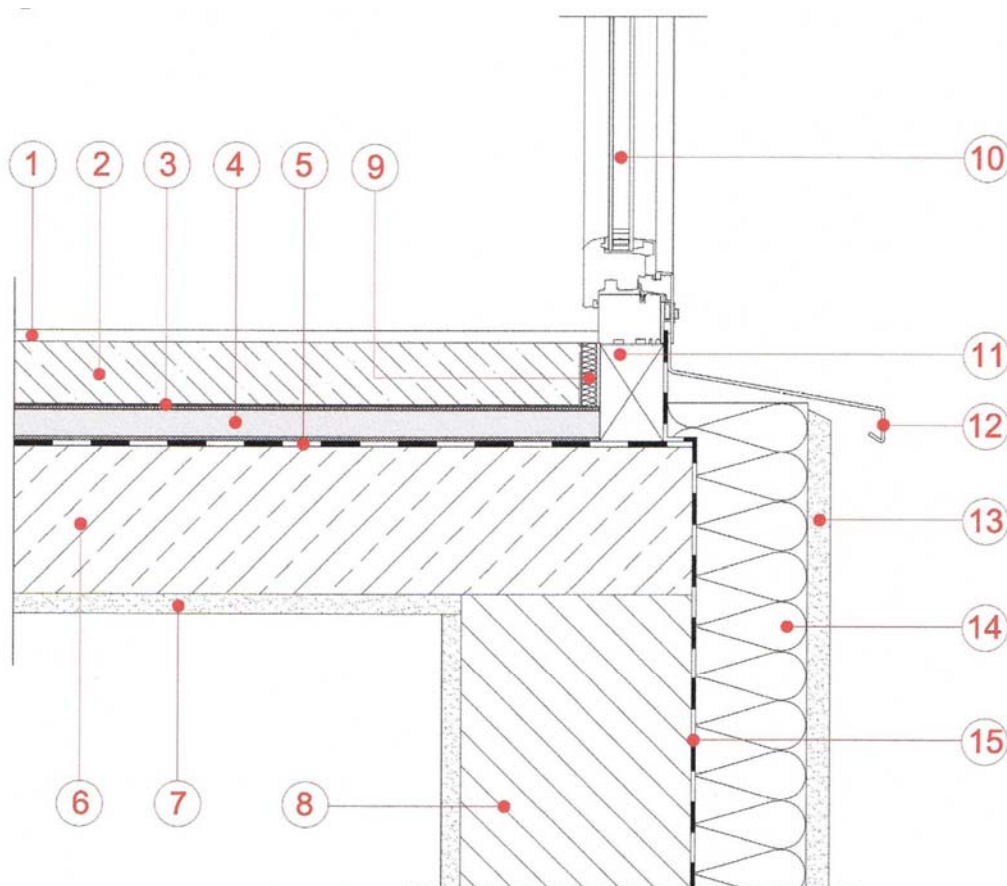


Product – Vacupor[®] RP2-B2

Insulation to Typical Basement

- | | |
|---------------------------------|-----------------------|
| 1 – Floor Covering | 9 – Edge Insulation |
| 2 – Screed | 10 – Window |
| 3 – Separation Layer | 11 – Supporting Frame |
| 4 – Vacupor [®] RP2-B2 | 12 – Window Cill |
| 5 – Vapour Barrier | 13 – Render System |
| 6 – Concrete | 14 – Insulation |
| 7 – Plaster Board | 15 – Vapour Barrier |
| 8 – Blockwork | |



The sketches above and their related descriptions are typical representations only. All designs must be carried out for a specific project and should be cleared by the final client or their representatives with either Building Control or the relevant authorities.

For Further Information Contact:

EnviroHomes Ltd, Blyth CEC
Ridley St, Blyth. NE24 3AG.
Tel: 01670 542857
Fax: 01670 542898
Email: enquiry@envirohomes.co.uk
Web: www.envirohomes.co.uk