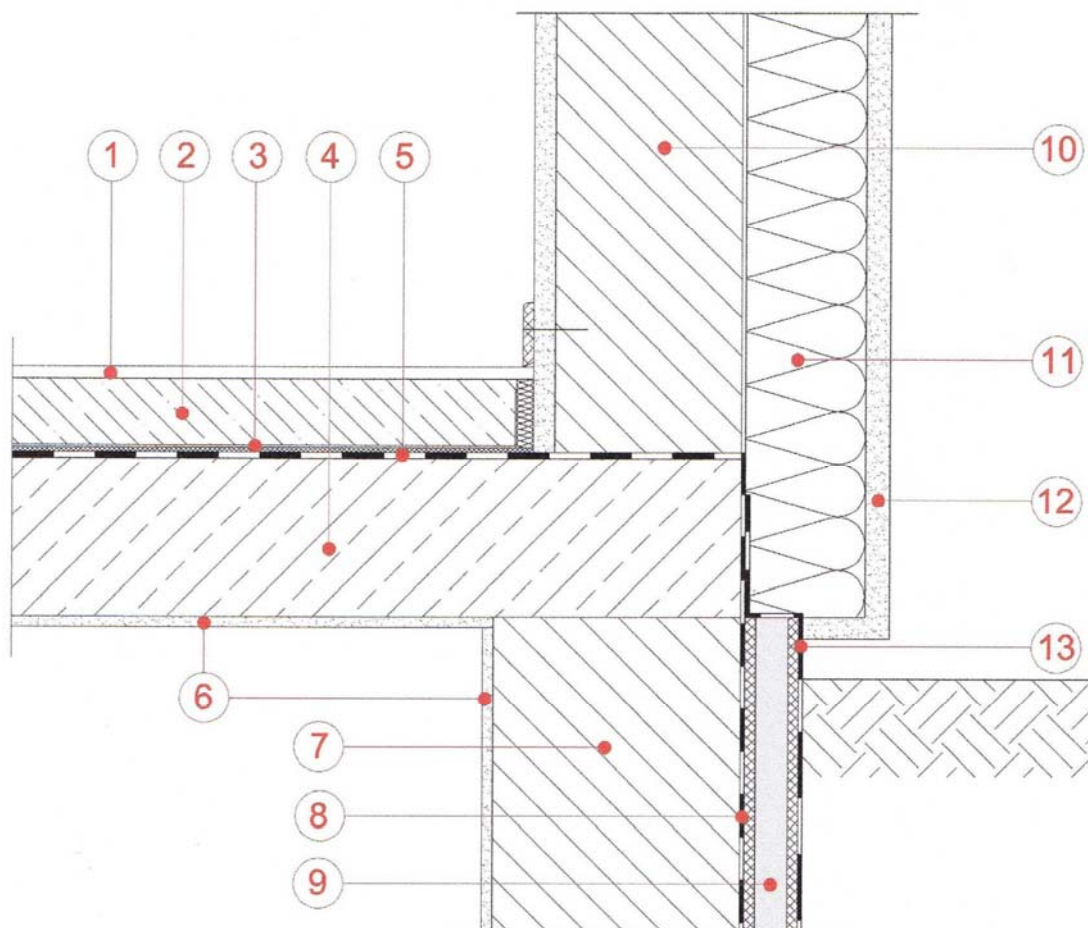


Product – Vacupor[®] PS-B2

Potential Thermal Bridging Insulation

- | | |
|----------------------------|--------------------------------------|
| 1 – Floor Covering | 8 – Sealing Membrane |
| 2 – Screed | 9 – Vacupor [®] PS-B2 10/10 |
| 3 – Sound Absorption Layer | 10 – Blockwork |
| 4 – Concrete or Similar | 11 – Traditional Insulation |
| 5 – Sealing Layer | 12 – Render |
| 6 – Interior Plaster | 13 – Sealing Membrane |
| 7 – Cellar Blockwork | |



The sketches above and their related descriptions are typical representations only. All designs must be carried out for a specific project and should be cleared by the final client or their representatives with either Building Control or the relevant authorities.

For Further Information Contact:

EnviroHomes Ltd, Blyth CEC
Ridley St, Blyth. NE24 3AG.
Tel: 01670 542857
Fax: 01670 542898
Email: enquiry@envirohomes.co.uk
Web: www.envirohomes.co.uk