



# Volumetric Construction

## EnviroHomes Ltd

A unique method of manufacture for the 21st Century, which fully utilizes Off-Site Manufacture as a method of construction, leading to unparalleled quality control with no weather constraints. The system allows for rapid delivery of units and is extremely versatile in its application.

Designs offer the specifier a complete building solution from the ground up — from single to multi-storey dwellings.

The concept allows for maximum internal flexibility both at design and in the future when remodeling may be considered.

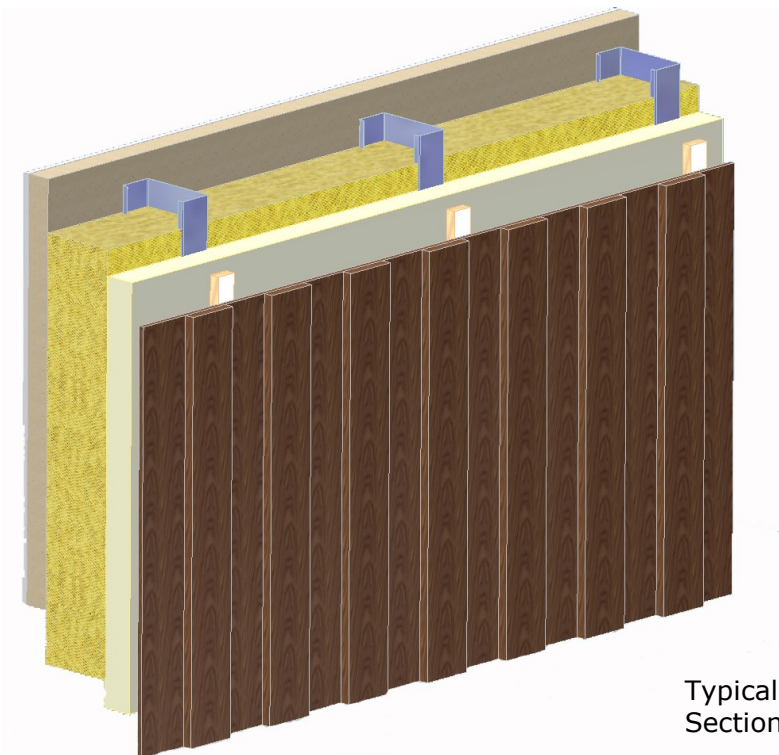
### EnviroHomes Ltd

Blyth CEC,  
Ridley Street, Quayside,  
Blyth,  
Northumberland, NE24 3AG.

Phone: 01670 542857  
Fax: 01670 542898  
E-mail: [info@envirohomes.co.uk](mailto:info@envirohomes.co.uk)

Web: [www.envirohomes.co.uk](http://www.envirohomes.co.uk)

**EnviroHomes<sup>TM</sup> Ltd**  
Working with Nature



Typical Wall  
Sectional Build Up

# Volumetric Construction

## Specification

Wall U-Value - As low as 0.104 W/m<sup>2</sup>/K (Optional)

Hot Rolled Structural Steel Frame

Warm Frame Envelope with Built-in Drainable Cavity

Designs that can be used from Single to 14 Storey Buildings

Exceptional Acoustic Separation Between Floor Levels

Designed to give Outstanding Result Towards the Sustainable Homes Code.

Outstanding Variety of External Finishes — wet or Dry Dash, Acrylic Render, Brick Slip, Rain Screen etc.

Massively Reduced On-site Costs and Safety Requirements

Unique Framework Jointing System Giving Rise to Incredibly High Overall Structural Rigidity

Light Weight Construction Compared to Traditional Build

Rapid Off-Site Construction Period

Minimal Erection Time Required On-Site